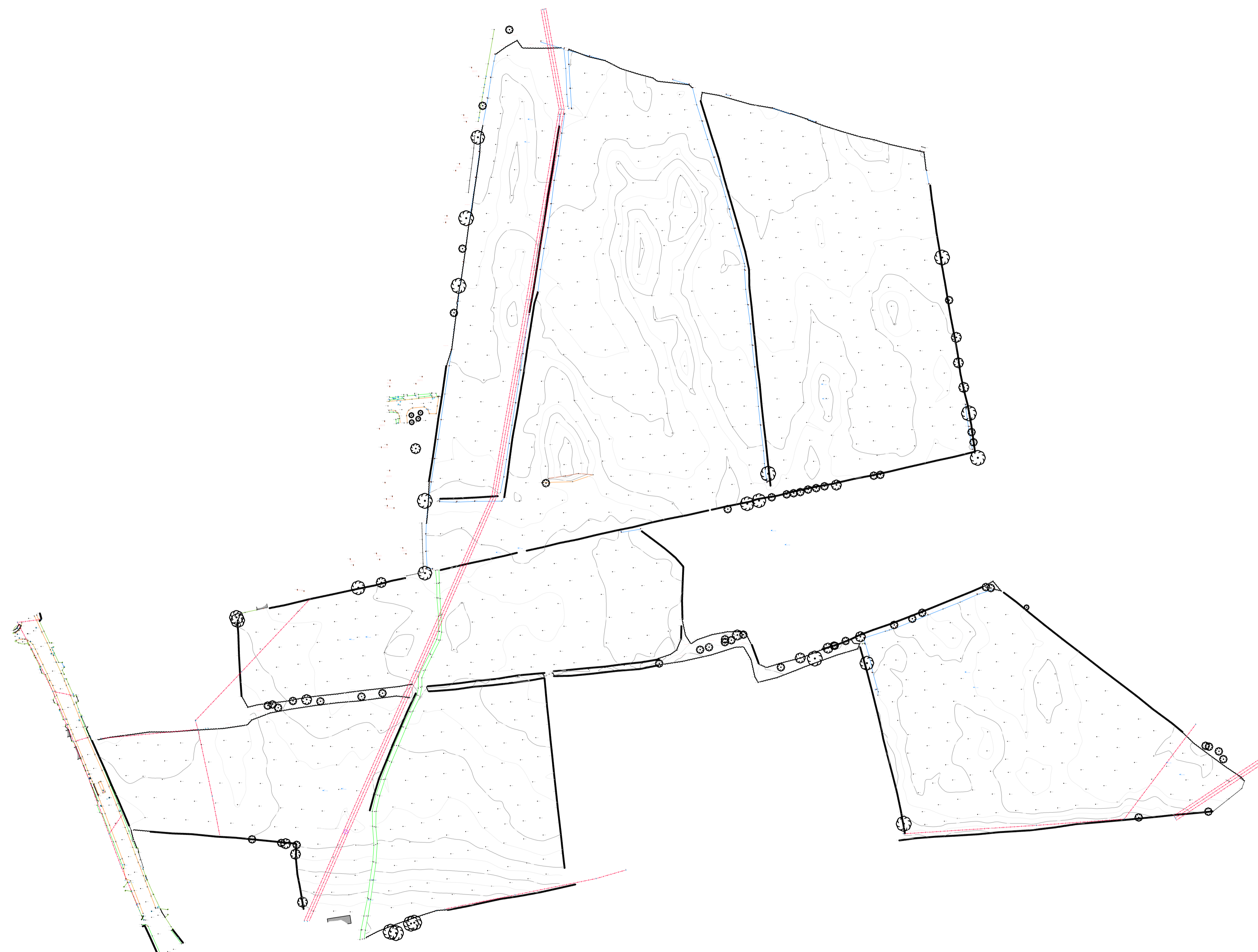


Rev.	By	Date	Description
A	ND	12/09/2019	PLANNING ISSUE



GENERAL NOTES
 -Refer to Site Plan drawing No. 1757-PA-003 for finished floor levels
 -Refer to Key plan for no. of units & orientation.
 -Refer to Engineer's drawings for drainage, etc.

OSI License No : 0033316

CPR Note:
 All works to be carried out using proper materials which are fit for the use they are intended and for the condition in which they are to be used.

All materials used in connection with the works to comply with the Construction Products Regulation (EU) No. 305/2011 and the harmonised technical specification/standards that fall within the remit of the CPR No. 305/2011

van Dijk Architects
 MILL HOUSE, MILL STREET, DUNGALTA, CO. LOUTH
 PH. 042-9354460 FAX. 042-9354460
 INFO@VANDIJKARCHITECTS.COM

DRAWING TITLE
**TOPOGRAPHICAL SURVEY
 SHD PLANNING ISSUE**

SCALE	DRAWING NUMBER	JOB
	1757-PA-002	CLONMINTH
REVISION	DATE REVISION	CLIENT
A	1757-PA-002	STEINFORT INVESTMENTS FUND
DESIGNED BY	DRAWN BY	DATE
BMcG	ND	12/09/2019

NOTE:
 DIMENSIONS MUST BE USED IN PREFERENCE TO SCALED DIMENSIONS. ANY DIMENSIONAL DISCREPANCIES MUST BE REPORTED TO THE ARCHITECT IMMEDIATELY. THIS DRAWING REMAINS THE COPYRIGHT OF VAN DIJK ARCHITECTS. IT MUST NOT BE USED FOR ANY PURPOSE BEYOND OR OTHERWISE WITHOUT THE EXPRESS PERMISSION OF THIS PRACTICE. DO NOT COPY OR REDISTRIBUTE THESE DRAWINGS OR ANY ADDITIONAL INFORMATION WITHOUT THE EXPRESS APPROVAL OF vanDijk Architects