

TYPICAL DETAIL - RAISED TABLE
SCALE 1:50

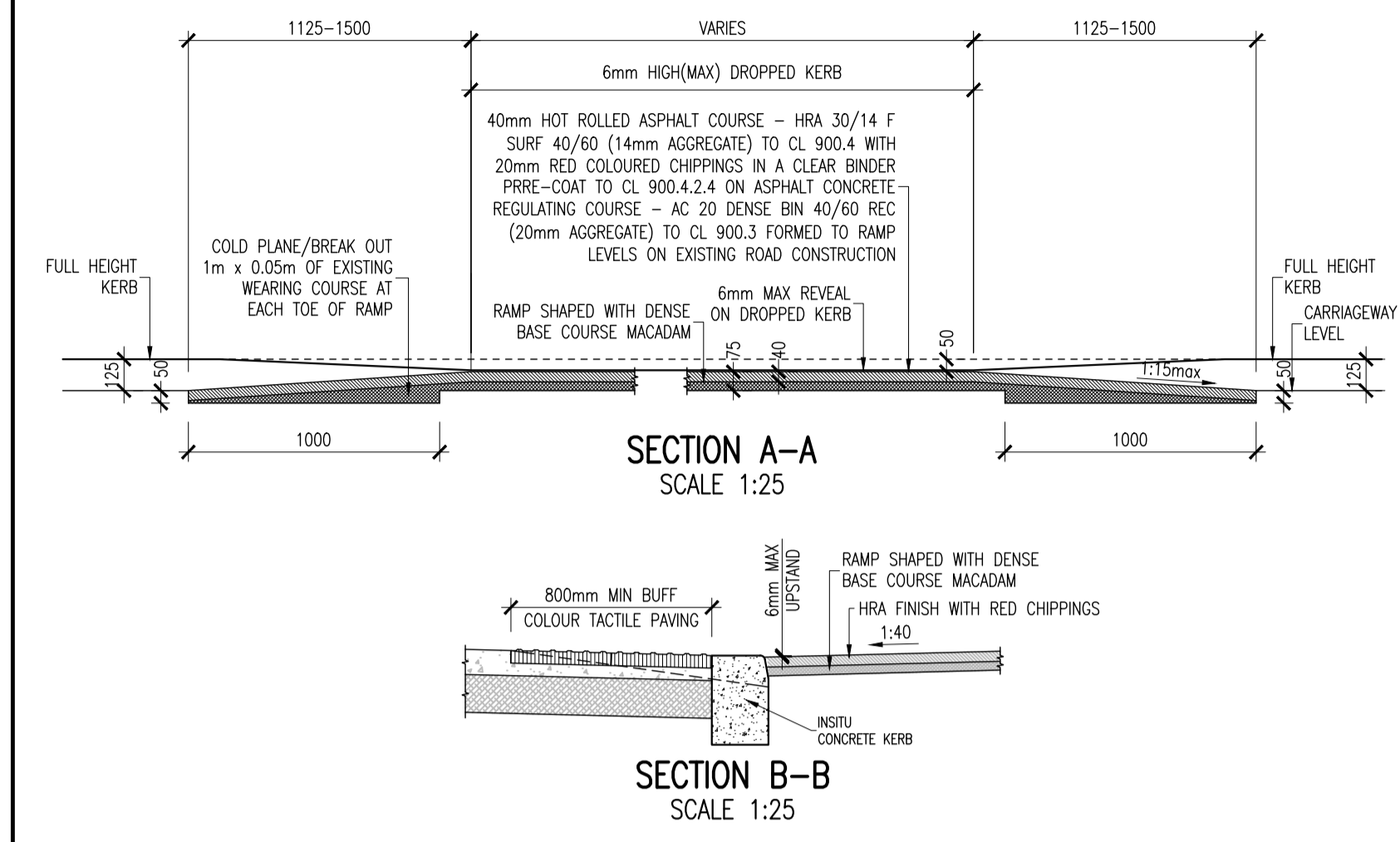


FIGURE 3B

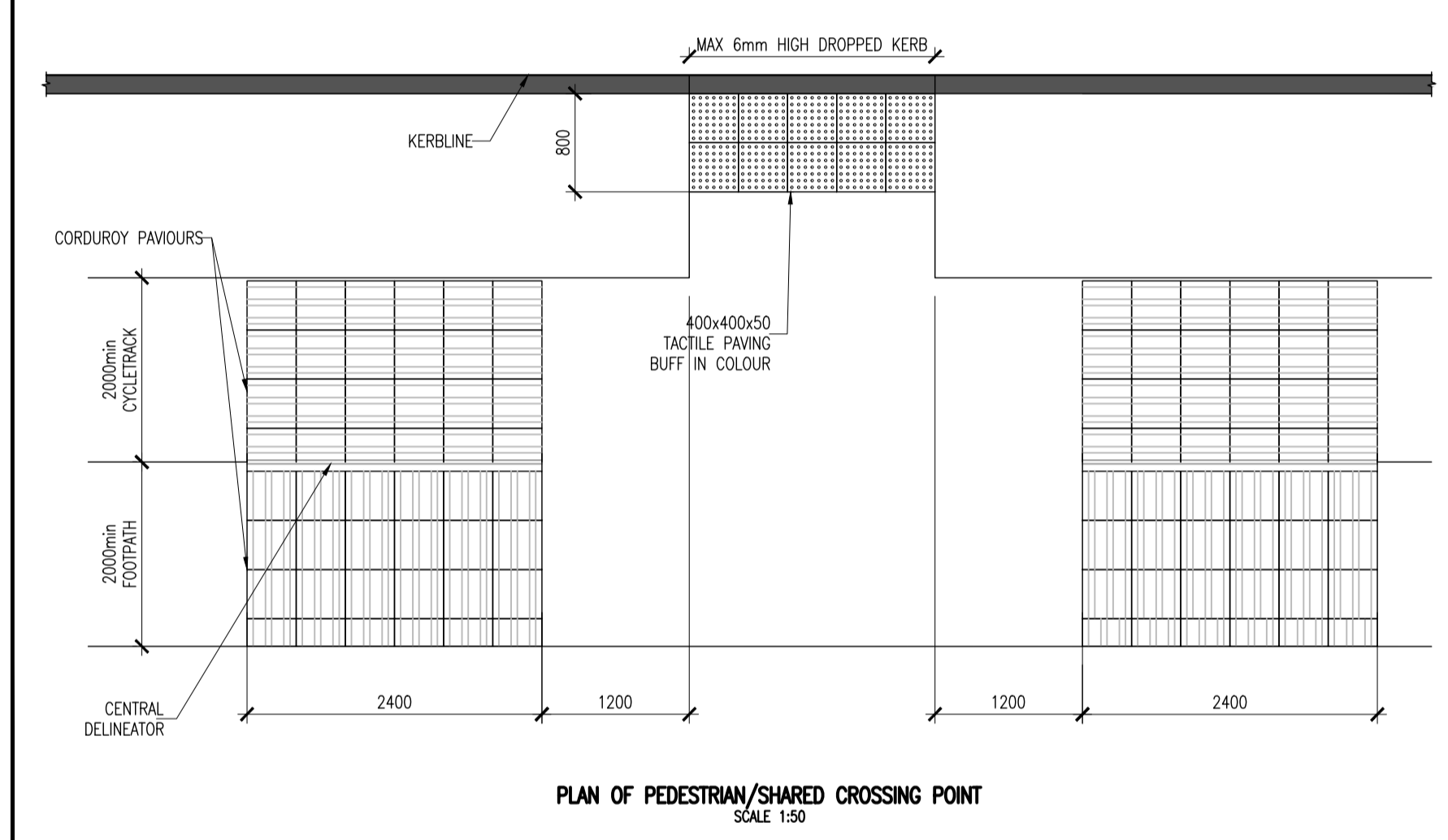
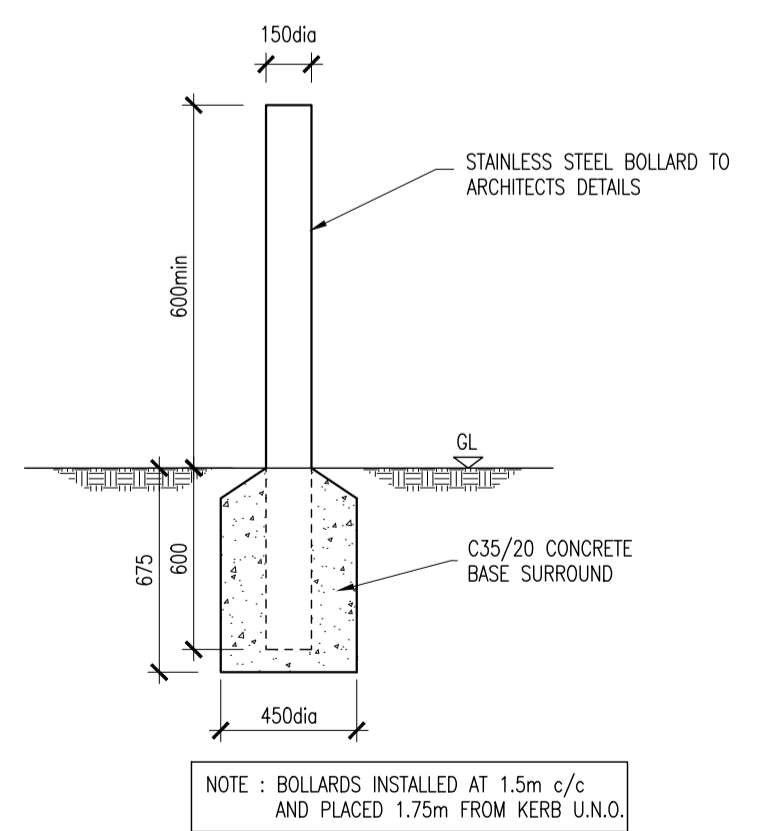
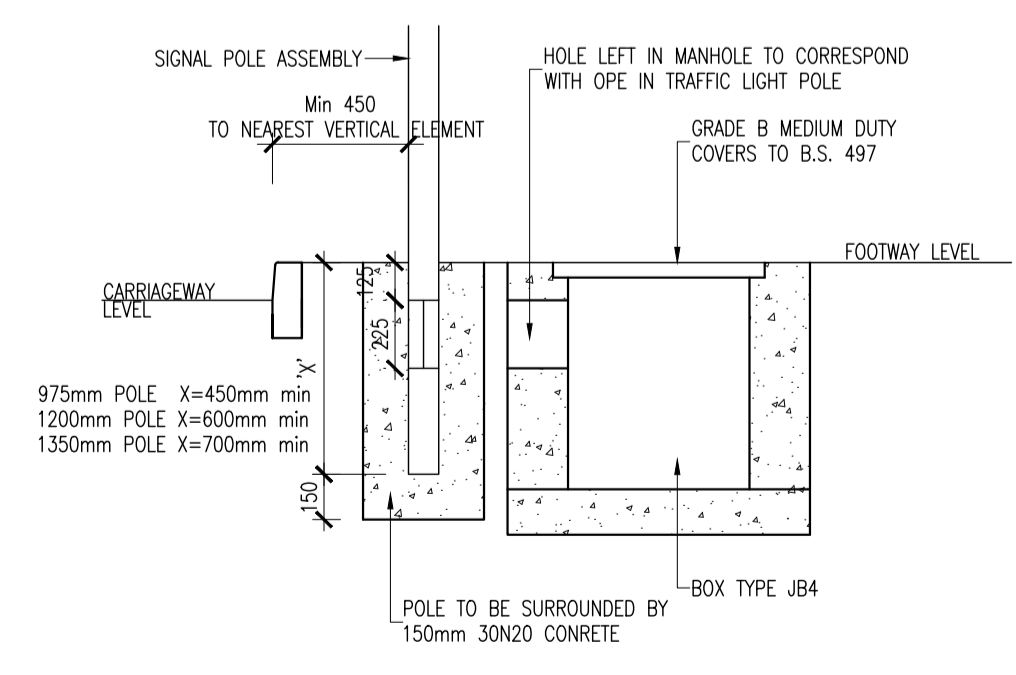


FIGURE 3C



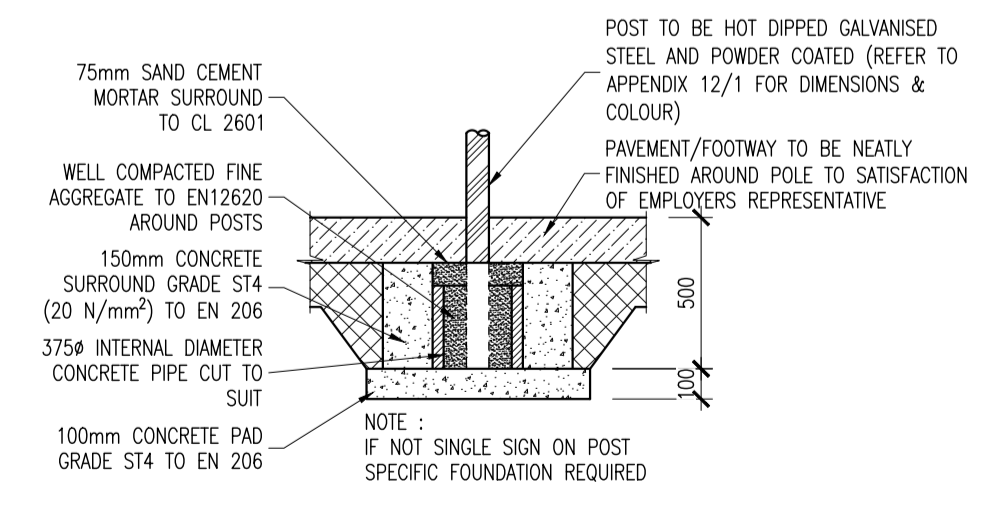
TRAFFIC BOLLARD DETAIL
SCALE 1:25

FIGURE 3D



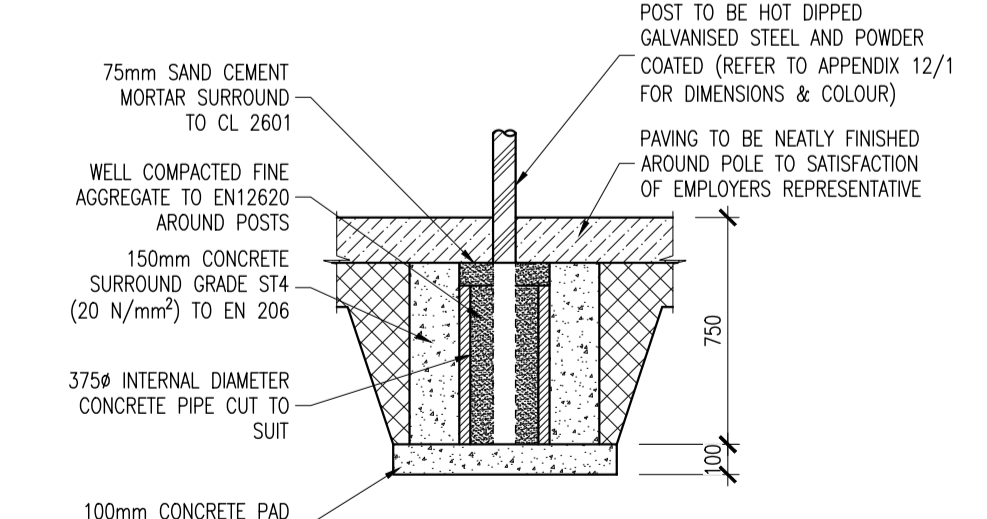
TRAFFIC SIGNAL POLE AND BOX INSTALLATION
SCALE 1:25

FIGURE 3E



POST POCKET DETAIL
(SIGN < 1.2.m HIGH)
SCALE 1:25

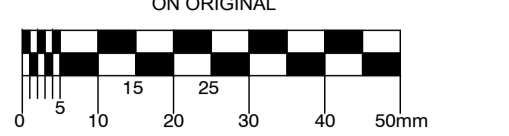
FIGURE 3F



POST POCKET DETAIL
(SIGN > 1.2.m HIGH; MAX 3.0m TO TOP OF SIGN)
STANDARD SIGNS ONLY; MAX SIGN AREA = 1.0m²
SCALE 1:25

FIGURE 3G

© COPYRIGHT OF THIS DRAWING IS RESERVED BY DBFL CONSULTING ENGINEERS. NO PART SHALL BE REPRODUCED OR TRANSMITTED WITHOUT THEIR WRITTEN PERMISSION.



- NOTES:
- ALL WORKS TO BE CONSTRUCTED IN ACCORDANCE WITH THE NRA SPECIFICATION FOR ROAD WORKS UNLESS OVERRIDDEN BY LOCAL OVERSEEING AUTHORITY'S STANDARDS
 - SUB-BASE MATERIAL SHALL COMPLY WITH CLAUSE 808 GRANULAR MATERIAL TYPE B OF NRA'S SPECIFICATION FOR ROAD WORKS (SRM) & SHALL SATISFY THE REQUIREMENTS OF TABLE 6/1 & 6/2.
 - SUB FORMATION & CAPPING MATERIAL SHALL COMPLY WITH CLAUSE 613 OF THE NRA'S SPECIFICATION FOR ROAD WORKS & SHALL SATISFY THE REQUIREMENTS OF TABLE 6/1 & 6/2.
 - STONE BLINDING WITH 2-6.5mm AGGREGATE SHALL MEET THE FOLLOWING GRADINGS, IN ACCORDANCE WITH IS EN 13242
- | BS SIEVE SIZE (mm) | % BY MASS PASSING |
|--------------------|-------------------|
| 14 | 100 |
| 10 | 98-100 |
| 6.3 | 80-99 |
| 2.0 | 0-20 |
| 1.0 | 0-5 |
- CRUSHED STONE WITH 4-20mm AGGREGATE SHALL MEET THE FOLLOWING GRADINGS, IN ACCORDANCE WITH IS EN 13242
- | BS SIEVE SIZE (mm) | % BY MASS PASSING |
|--------------------|-------------------|
| 40 | 100 |
| 31.5 | 98-100 |
| 20 | 90-99 |
| 10 | 25-70 |
| 4 | 0-15 |
| 5 | 0-5 |
- ANY ROADS PROPOSED TO BE USED FOR CONSTRUCTION TRAFFIC ARE TO HAVE INCREASED DEPTH OF SUB-BASE FOR THE DURATION OF CONSTRUCTION IN ACCORDANCE WITH DBFL SPECIFICATIONS.
 - ALL WORKS SHALL BE COMPLETED IN ACCORDANCE WITH THE REQUIREMENTS OF THE LOCAL AUTHORITY.
 - ALL GEOGRIDS TO BE LAID IN ACCORDANCE WITH MANUFACTURERS SPECIFICATIONS.
 - ALL AGGREGATES PROPOSED FOR USE ON THIS SCHEME SHALL MEET THE REQUIREMENTS OF THE NRA SPECIFICATION FOR ROAD WORKS AND IN ADDITION THE REQUIREMENTS STATED IN STANDARD RECOMMENDATION S.R. 21:2014 GUIDANCE ON THE USE OF I.S. EN 13242:2002 1A1:2007-AGGREGATES FOR UNBOUND AND HYDRAULICALLY BOUND MATERIALS FOR USE IN CIVIL ENGINEERING WORK AND ROAD CONSTRUCTION.

REV.	DATE	DESCRIPTION	BY	CHKD.
PLANNING				
DESIGNED	ED	PREPARED	GMC	
DATE	JUN 2020	CHECKED	BK	

DBFL Consulting Engineers email: info@dbfl.ie site: www.dbfl.ie

Dublin Office: Ormrod House, Upper Ormrod Quay, Dublin 7, Ireland. PHONE: +353 1 400 4000 FAX: +353 1 400 4050

Waterford Office: Unit 2, The Chandlers, 1-2 O'Connell Street, Waterford, Ireland. PHONE: +353 51 308 500 FAX: +353 51 844 813

PROJECT
LANDS AT CLONMINCH, TULLAMORE, CO OFFALY

DRG. TITLE
TYPICAL ROAD CONSTRUCTION DETAILS SHEET 3

CLIENT
STEINFORT INVESTMENTS FUND

SCALE AS SHOWN @A1 FILE REF. 180002-2011
DRG. NO. 180002-2013